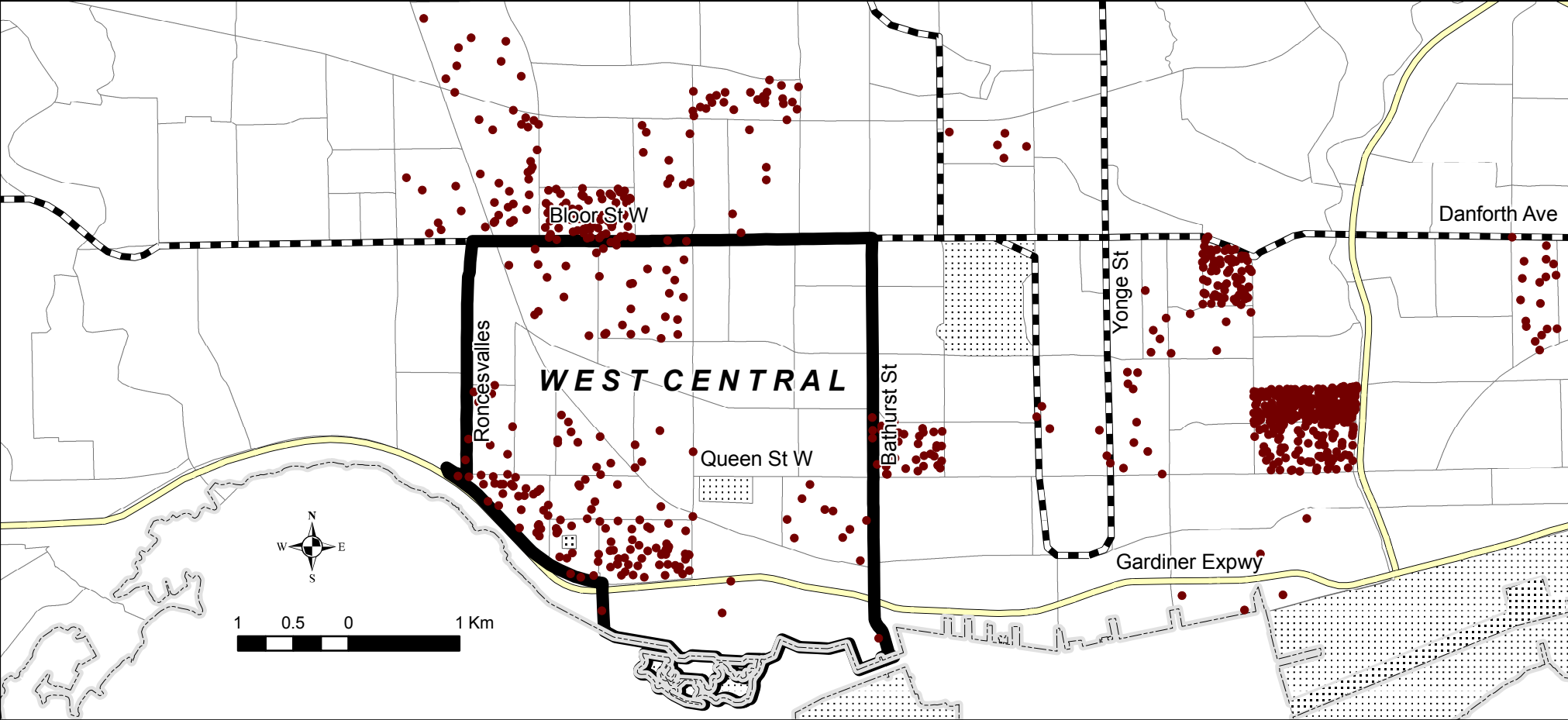


Neighbourhood Concentrations of Bangladeshi Populations, by Census Tracts, West Central Toronto, 2006

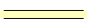






Based on analysis by R. Maaranen, UofT Cities Centre
 Source: Statistics Canada, Census 2006

(c) Centre for Urban and Community Studies, University of Toronto, 2008
 Neighbourhood Change Community University Research Alliance, SSHRC
 See: www.NeighbourhoodChange.ca & www.gtuo.ca
 Community partner: St Christopher House, Toronto
 Principal Investigator: J.D. Hulchanski www.urbancentre.utoronto.ca

1 Dot represents 2 persons
 of Bangladeshi origin

Dots are randomly placed within each census tract

-  Highways (2005)
-  Subway (2005)
-  No Data
-  Municipalities (2006)
-  West Central Toronto
St. Christopher House
Catchment Area